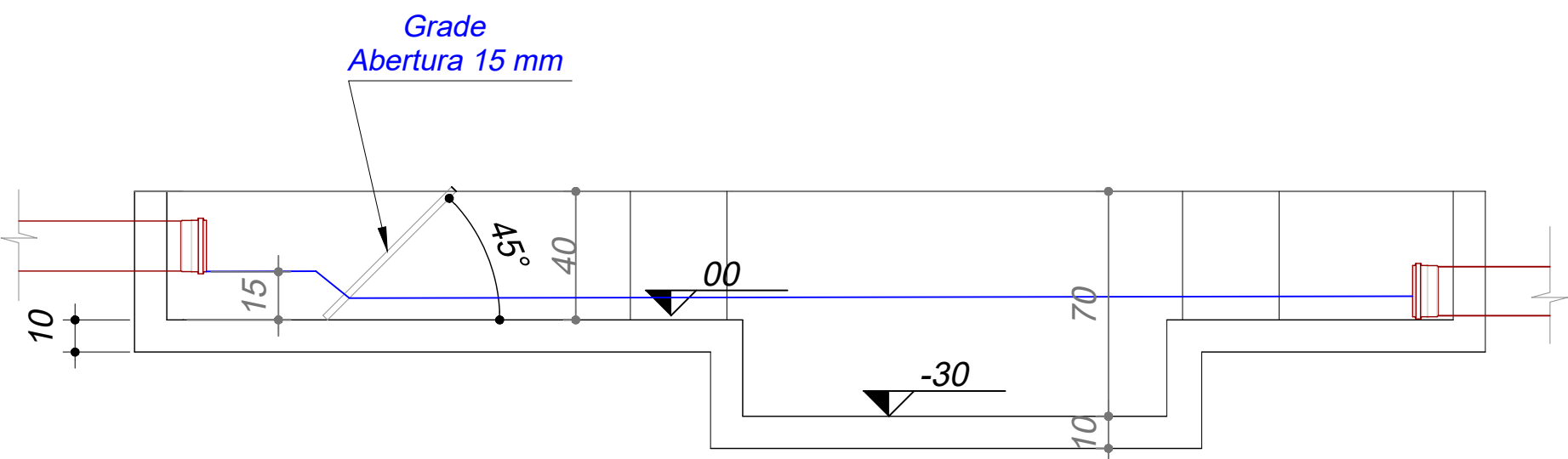
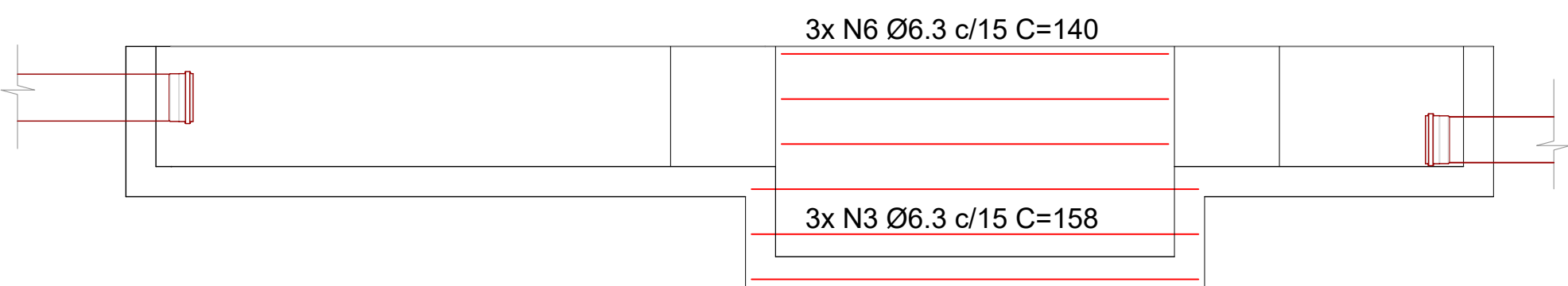


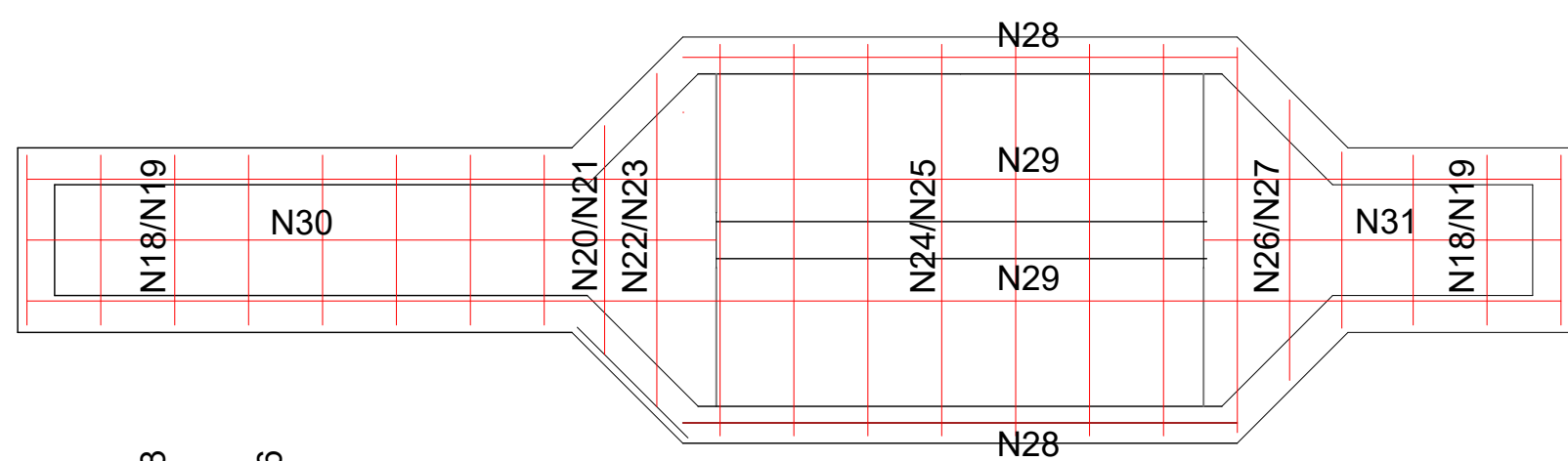
PLANTA



CORTE A - A



PAREDE CENTRAL DA CAIXA DE AREIA



LAJE DE FUNDO

- 12x N18 Ø6.3 c/20 C=58
12x N19 Ø6.3 c/20 C=46
1x N20 Ø6.3 c/20 C=74
1x N21 Ø6.3 c/20 C=62
1x N22 Ø6.3 c/20 C=102
1x N23 Ø6.3 c/20 C=90
8x N24 Ø6.3 c/20 C=118
8x N25 Ø6.3 c/20 C=106
1x N26 Ø6.3 c/20 C=88
1x N27 Ø6.3 c/20 C=76

2x N28 Ø5 c/33 C=150

2x N29 Ø5 c/33 C=415

1x N30 Ø5 C=186

1x N31 Ø5 C=97

4x N7 Ø6.3 c/12 C=118
4x N8 Ø6.3 c/12 C=106

4x N9 Ø6.3 c/15 C=58

4x N10 Ø6.3 c/15 C=46

4x N11

4x N11

4x N11

4x N11

4x N11

4x N11

4x N11

4x N11

4x N11

4x N11

4x N11

4x N11

4x N11

4x N11

4x N11

4x N11

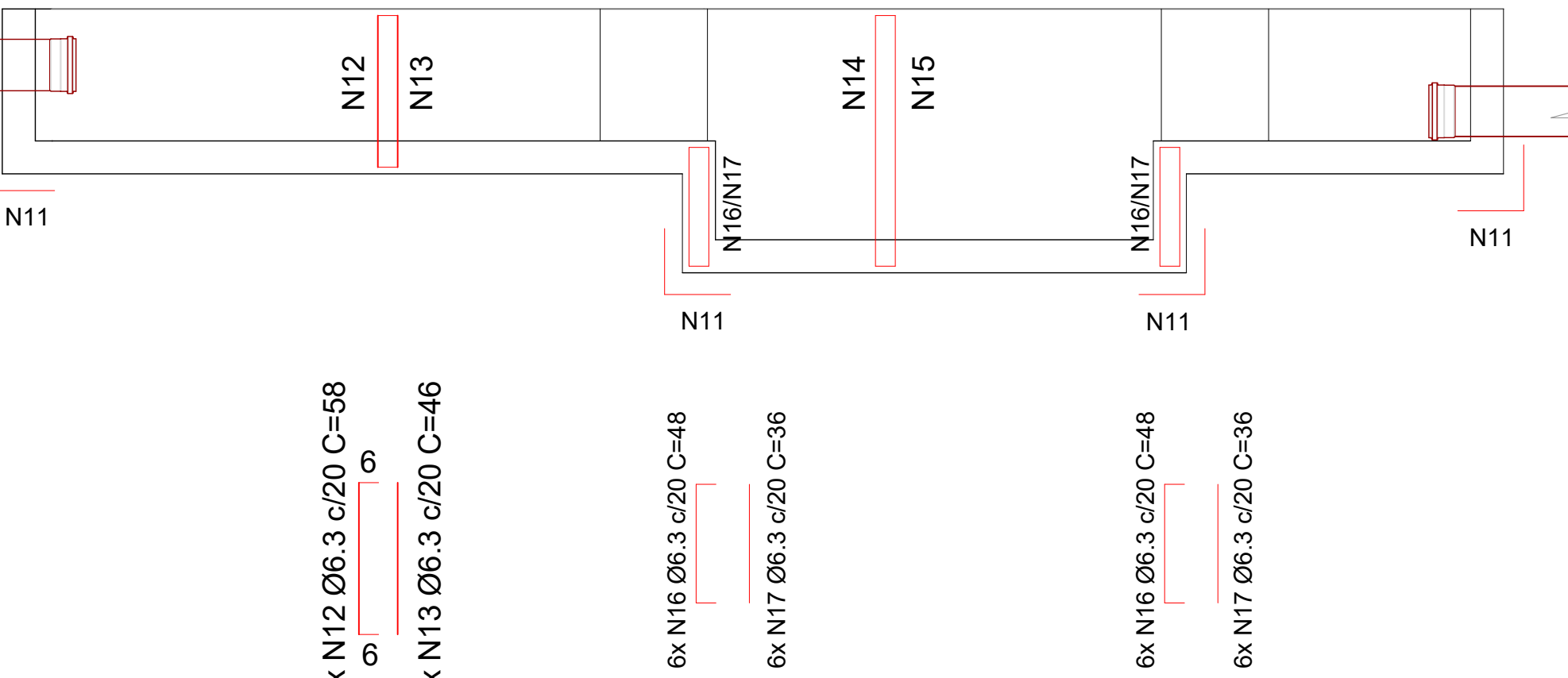
4x N11

4x N11

4x N11

4x N11

4x N11



PAREDES

Resumo do aço			
Aço	Diâmetro	C.Total (m)	Peso + 10% (kg)
CA 60	5.0	14,13	2,39
CA 50	6.3	292,68	79,84
			82,24

Arame recozido (kg)	4,11
Volume de concreto C-25 (m³)	0,94

Relação do aço					
Aço	N	Diâmetro (mm)	Quant.	Unid. (cm)	C.Total (cm)
CA 50	1	6.3	8	457	3.656,00
	2	6.3	8	445	3.560,00
	3	6.3	7	158	1.106,00
	4	6.3	7	146	1.022,00
	5	6.3	3	128	384,00
	6	6.3	3	140	420,00
	7	6.3	8	118	944,00
	8	6.3	8	106	848,00
	9	6.3	8	58	464,00
	10	6.3	8	46	368,00
	11	6.3	114	40	4.560,00
	12	6.3	38	58	2.204,00
	13	6.3	38	46	1.748,00
	14	6.3	21	88	1.848,00
	15	6.3	21	76	1.596,00
	16	6.3	12	48	576,00
	17	6.3	12	36	432,00
	18	6.3	12	58	696,00
	19	6.3	12	46	552,00
	20	6.3	1	74	74,00
CA 60	21	6.3	1	62	62,00
	22	6.3	1	102	102,00
	23	6.3	1	90	90,00
	24	6.3	8	118	944,00
	25	6.3	8	106	848,00
	26	6.3	1	88	88,00
	27	6.3	1	76	76,00
	28	5.0	2	150	300,00
	29	5.0	2	415	830,00
	30	5.0	1	186	186,00
	31	5.0	1	97	97,00

SERVIÇO AUTÔNOMO MUNICIPAL DE ÁGUA E ESGOTO
Rua Caetano Carlos, nº 466 - Centro - Campos Novos - SC
(49) 3541 0844 - engenharia@samaecn.com.br

E.T.E. Condomínio Nossa Senhora das Dores

Tratamento Preliminar ESCALA: INDICADA

DESENHO: Mario

PRANCHA

01/02